

XMPie Training

EDU Tutorial - Part 8 -

Using a ulmage package in uCreate Print

Document version: v3

Software version: v12.1

Published date: May 2023



A CareAR Company

one to one in one™



Notices

© 2023 XMPie®, A CareAR Company. All rights reserved.

U.S. Patent 6948115, 7406194, 7548338, 7757169 and pending patents. JP Patent 4406364B and pending patents.

For information, contact XMPie Inc.

485 Lexington Avenue

10th. Floor

New York, NY 10017

More information can be found at www.xmpie.com

XMPie provides this publication "as is" without warranty of any kind, either express or implied. This publication may contain technical inaccuracies or typographical errors. While every precaution has been taken in the preparation of this document, the publisher and author assume no responsibility for errors or omissions. Nor is any liability assumed for damages resulting from the use of the information contained herein. Changes are periodically made to the information herein; these changes will be incorporated in new editions of the publication. XMPie may make improvements and/or changes in the product(s) and/or the program(s) described in this publication at any time.

XMPie, the XMPie logo, PersonalEffect, uChart, uCreate, uDirect, uEdit, ulmage, uPlan, uProduce, uStore, StoreFlow, Circle, ADOR, XLIM, RURL, Hosted e-Media Express Edition, and the slogan "one to one in one" are trademarks or registered trademarks of XMPie, A CareAR Company, and may not be used without permission. No part of these materials may be used or reproduced in any form, or by any means, without the express written consent of XMPie. To request permission to use these materials, please contact marketing@xmpie.com.

XEROX® and XEROX FreeFlow®, FreeFlow Output Manager® and FreeFlow Process Manager® are trademarks of Xerox Corporation in the United States and/or other countries.

Adobe Acrobat, Adobe Dreamweaver, Adobe Illustrator, Adobe InDesign, Adobe Photoshop and Adobe After Effects are trademarks of Adobe Systems Incorporated.

SQL Server, Windows Server, Windows, Microsoft Office, Microsoft Excel and Microsoft Access are trademarks or registered trademarks of Microsoft Corporation.

Mac OS is a trademark of Apple Computer, Inc.

ComponentArt is a trademark of ComponentArt Inc.

Other trademarks and service marks are the property of their respective owners.

Contents

About this tutorial	4
Target audience	5
Document structure	5
Reference materials	5
Prerequisites	5
Module 1:	
Introduction and overview	6
Duration	6
Objectives	6
Procedure	6
Unzip and review the contents	6
Open the InDesign document	6
Re-link to the data source (if necessary)	7
Re-link images (if necessary)	7
Install or replace missing document fonts (if necessary)	8
Set High Quality display performance	8
Review campaign requirements	9
Front page tasks	9
Module 2:	
Creating a Graphic Content object for ulmage	10
Duration	10
Objectives	10
Procedure	10
Creating a new Graphic Content object	10
Configuring the ulmage Package settings	11
Module 3:	
Placing the Graphic Content object into the design	13
Duration	13
Objectives	13
Procedure	13
Exporting the XMPie DPKG	13
Module 4:	
Dynamic Print	15
Duration	15
Objectives	15
Procedure	15
Basic variable data print	15
Variable data print with imposition	17
Review and extra exercises	19
Review questions	19
Additional exercises	19
Exercise 1	19

About this tutorial

Congratulations on your selection of XMPie uCreate Print for your Variable Data Print (VDP) needs.

The XMPie EDU Tutorial is a series of tutorials that together will provide a thorough introduction to VDP techniques using Adobe InDesign and XMPie uCreate Print.

The EDU Tutorial is divided into different sections to enable you to quickly jump forward or backward to find help to learn different aspects of the product functionality:

- Part 1 - Project planning, preparation and gathering
 - Understanding the project
 - Checking the available data
 - Checking the available image and text file assets
 - Planning what content objects are needed to achieve the desired outcome
- Part 2 - Basic VDP job
 - Linking to your data source
 - Placing Text and Graphic Content objects into the InDesign document
 - Managing text copy fitting and dynamic graphic fitting
 - Creating your first VDP output
- Part 3 - Using rules and logic
 - Introduction to the Rule editor
 - Functions and how to use them
 - Creating rule or logic
- Part 4 - Introducing more content object types
 - Creating and using Visibility, Style and Text File content objects
- Part 5 - Barcodes
 - Creating and using print barcodes
- Part 6 - ulmage regular font effects
 - Creating a font-based ulmage template with Adobe Photoshop
 - Creating a ulmage Document Package
 - Optimization techniques
- Part 7 - ulmage image font effects
 - Creating an image-font-based ulmage template with Adobe Photoshop
 - Creating a ulmage Document Package
 - Optimization techniques
- Part 8 - Using the ulmage package in uCreate Print
 - Linking InDesign and uCreate Print to the ulmage package
- Part 9 - Table Content objects and uChart
 - Linking to secondary data sources
 - Table Content objects
 - Adding uChart to the document
- Part 10 - Working with uProduce
 - Creating Campaign- and Document-packages
 - Uploading packages to the uProduce Dashboard
 - Processing the document on the server
 - Working with Circle

Target audience

This tutorial is designed to provide basic information, step-by-step instructions, and sample materials for self-learning. Should you require more visual assistance, there are accompanying videos available at <http://campus.xmpie.com/s/uCreatePrint>.

At the end of this Tutorial, there are review questions, and suggested exercises to build on the skills outlined in the tutorial.

The content is designed for customers who have bought XMPie uDirect or PersonalEffect and wish to learn how to use XMPie's ulmage product to create personalized image templates for use together with uCreate Print and VDP production.

It is expected that the reader will already have a basic working knowledge of Adobe Photoshop. If not, it is recommended to first complete some basic Photoshop training for example, courses with Adobe: <https://helpx.adobe.com/indesign/tutorials.html> or a 3rd party organization such as Lynda.com: <https://www.lynda.com/InDesign-training-tutorials/233-0.html>

Document structure

This tutorial uses the following icons to draw your attention to special key items to help you identify the information you are looking for when completing the tutorial.



Additional information and notes

This is an example of additional information and notes.



NOTE: Special attention and warning

This is an example of special attention and warning.

Sections of the tutorial which require hands on action will be highlighted with the following icon.



Step by step instructions

This is an example of step by step instructions.

Reference materials

- ulmage User Guide (Access via the help menu from the Dynamic Content menu).
- uCreate Print User Guide (Access via the help menu from the Dynamic Content menu).
- uCreate Print Tutorial videos (Access at <http://campus.xmpie.com/s/uCreatePrint>)

Prerequisites

This tutorial assumes that you:

- Are familiar with Photoshop CC,
- have Adobe Photoshop CC2023 or later installed (trial version is acceptable),
- have XMPie uCreate Print installed. (ulmage is installed as part of uCreate Print), and
- ulmage license must be installed. (If there is no ulmage license, a "trial" watermark will appear on regular (font-based) ulmage effects, and it is not possible to use image-font effects with no license.)

Module 1:

Introduction and overview

In this module, we use the ulmage Document Package that we created in Tutorial 6 to create personalized images with uCreate Print. We will place the personalized images into the EDU Postcard InDesign file that we created in earlier tutorials. If you didn't complete the earlier tutorials, you can download and unzip the tutorial resource files for this tutorial which contains the necessary files. This overview will also describe what we want to achieve in this sample tutorial.

Duration

About 5 minutes

Objectives

After completing this module, you will be able to:

- Unzip and open a sample InDesign file provided by a colleague or customer, and
- Describe the the desired change to the document that is intended for this tutorial.

Procedure

Unzip and review the contents



Step by step instructions

Unzip the resources package. You should see the following files:

Name	Date modified	Type	Size
assets	16/10/2017 11:36 ...	File folder	
resources	16/10/2017 11:36 ...	File folder	
EDU Postcard Template8 CC2023.indd	16/10/2017 11:33 ...	InDesign Document	3,316 KB
EDU Static.idml	12/10/2017 9:04 AM	InDesign Markup ...	335 KB
EDU_Scores.csv	10/10/2017 2:13 PM	Microsoft Excel C...	1 KB
EDU201x Prospective Students.csv	5/09/2017 12:38 PM	Microsoft Excel C...	318 KB
graduation-regular-font.dpkg	22/08/2017 9:00 AM	DPKG File	2,671 KB
TUTORIAL-8_Using-a-ulmage-package-i...	11/10/2017 3:03 PM	Adobe Acrobat D...	6,091 KB

Open the InDesign document



Step by step instructions

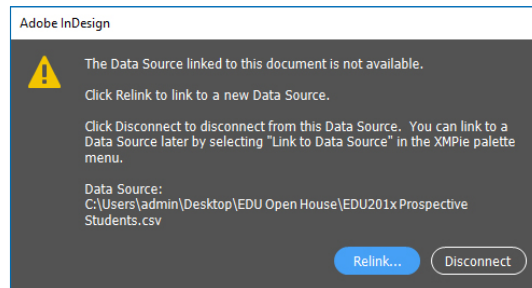
Launch InDesign and open the **EDU Postcard Template CC2023.indd** file.

If you have problems opening the file with your version of InDesign, then open the EDU_Static.idml file and **Save as...** to save it as an INDD document. You will need to repeat the steps outlined in Tutorial 2 before starting this tutorial.

Re-link to the data source (if necessary)



Step by step instructions

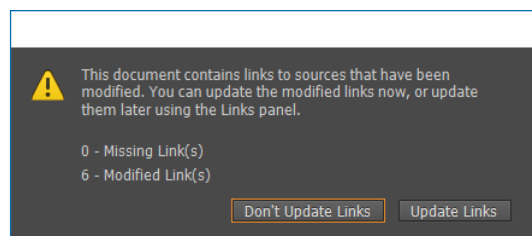


If you receive this warning dialog, then click **Relink** and browse to the **EDU201x Prospective Students.csv** file provided in the tutorial zip file.

Re-link images (if necessary)

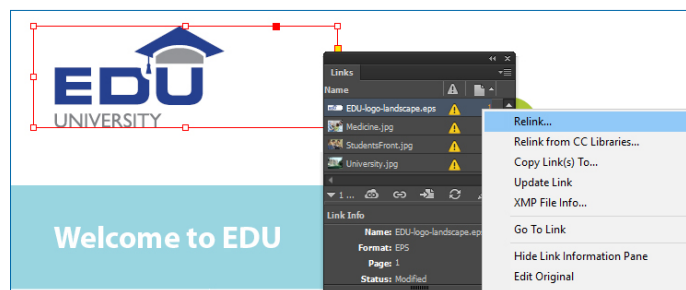


Step by step instructions



If InDesign prompts you about modified links, click to **Update Links**

InDesign should locate the images automatically. If not, follow these optional steps:



Open the Links panel: **Window -> Links** (Ctrl-Shift-D).

Select the links that have the caution icon, and select to **Relink...** the links from the panel menu.

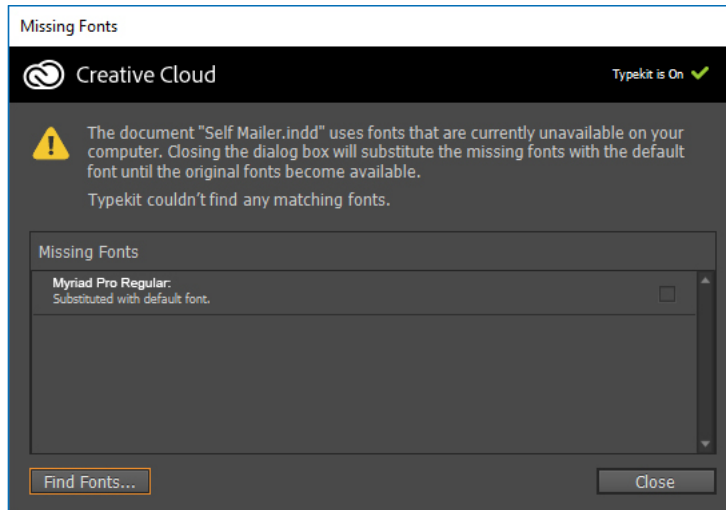
Locate the image of the same name in the resources or assets folder. InDesign should offer to relink other images found in the same folder. If not, repeat the process until all images are relinked.

Install or replace missing document fonts (if necessary)

The tutorial document uses the fonts Impact and Myriad Pro, which should be automatically installed by Adobe InDesign. If either or both fonts are not available on your computer, InDesign will prompt you about missing fonts. You can look for them online and install them, or simply replace the fonts with one you already have installed.



Step by step instructions

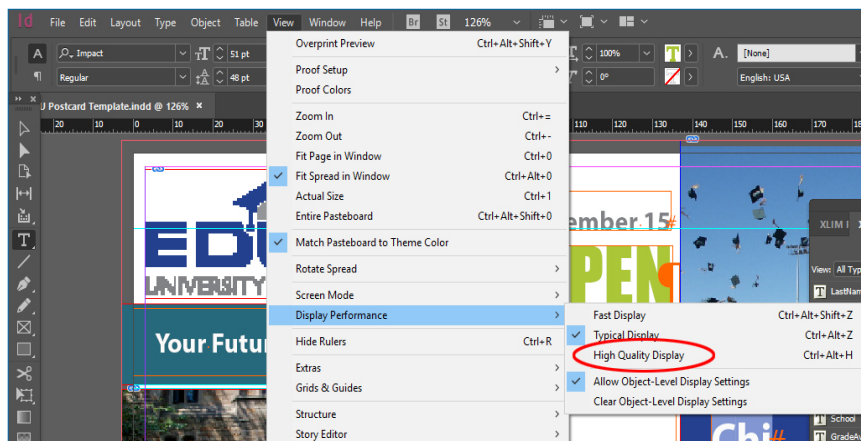


If InDesign prompts you about missing fonts, then click **Find Fonts...** and select to replace the missing fonts with one already installed on your computer.

Set High Quality display performance



Step by step instructions



From the InDesign **View** menu, select **Display Performance** and then **High Quality Display**.

Alternatively, use the **Ctrl+Alt+H** keyboard shortcut.

Review campaign requirements

Before starting any VDP job, it is recommended to look at the document and the data to understand what information you have, and what needs to change in the document. It can also be very helpful to write a list of ADORs or content objects that are needed to complete the job.

In this tutorial, we are going to continue the EDU Postcard document we started in the previous tutorial.

The invitation postcard document looks like this:



Additional information and notes

ADOR (Automatic Dynamic Object Replacement) is a patented XMPie technology for objects that can be dynamically changed or replaced in the document. For example a Text ADOR can change text in the document. We also refer to ADORs as Content Objects.

The data for this tutorial looks like this:

	A	B	C	D	E	F	G	H	I	J	K	L	M	N	O	P	Q
1	FirstName	LastName	StreetAddress	StreetAddress2	City	State	ZipCode	Gender	School	GradeAvg	EmailAddress	BirthDay	PURL	IMBSample	SortID	Tray	Marker
2	Salvador	Randolph	866 Hilltop Street	Apt 23	Wilbraham	MA	01095	m		89	SalvadorR@somefakeaddress.com	5/5/1993	Salvador.Randolph.744	123456789012345678901234010951234	1	1	#
3	Chi	Cotton	588 Frank Avenue		Springfield	MA	01103	f	Engineering	83	ChiC@somefakeaddress.com	1/30/1992	Chi.Cotton.972	123456789012345678901234011031234	2	1	
4	Lauretta-Leigh	Navarrete	4899 Trouser Leg Road	Unit 2	Springfield	MA	01103	m	Engineering	95	Lauretta-Leigh@somefakeaddress.c	9/16/1993	Lauretta-Leigh.Navarrete.208	123456789012345678901234011031234	3	1	
5	Yolanda	Tourville	1411 Kennedy Court		Worcester	MA	01610	f		87	YolandaT@somefakeaddress.com	2/27/1992	Yolanda.Tourville.378	123456789012345678901234016101234	4	1	
6	Rita	Nock	940 C Street		Framingham	MA	01702	f		83	RitaN@somefakeaddress.com	8/6/1984	Rita.Nock.869	123456789012345678901234017021234	5	1	
7	Dorothy	Beaumont	2835 Smith Street	Level 4	Framingham	MA	01702	f		76	DorothyB@somefakeaddress.com	12/18/1993	Dorothy.Beaumont.377	123456789012345678901234017021234	6	1	
8	Anthony	Britton	132 Russell Street		Acton	MA	01720	m		81	AnthonyB@somefakeaddress.com	4/5/1986	Anthony.Britton.338	123456789012345678901234017201234	7	1	
9	Jenny	Race	3067 Pearlman Avenue		Bedford	MA	01730	f	Law	94	JennyR@somefakeaddress.com	4/18/1992	Jenny.Race.914	123456789012345678901234017301234	8	1	
10	Maria	Price	2636 Rainy Day Drive		Woburn	MA	01801	f	Law	94	MariaP@somefakeaddress.com	9/15/1981	Maria.Price.164	123456789012345678901234018011234	9	1	
11	Alta	Smith	4230 Rainville Road		Burlington	MA	01803	f	Law	79	AltaS@somefakeaddress.com	6/13/1990	Alta.Smith.104	123456789012345678901234018031234	10	1	
12	Gwendolyn	Hernandez	3971 Hampton Meadows		Haverhill	MA	01830	f	Law	82	GwendolynH@somefakeaddress.co	4/16/1996	Gwendolyn.Hernandez.143	123456789012345678901234018301234	11	1	
13	Michelle	Labrecque	1698 Levy Court		Lawrence	MA	01840	f	Law	100	MichelleL@somefakeaddress.com	8/7/1981	Michelle.Labrecque.766	123456789012345678901234018401234	12	1	
14	Angie	Mifflin	1982 Hampton Meadows		West Newbury	MA	01985	f		87	AngieM@somefakeaddress.com	7/26/1987	Angie.Mifflin.578	123456789012345678901234019851234	13	1	
15	Michael	Danek	1554 Huntz Lane		Foxboro	MA	02035	m	Engineering	91	MichaelD@somefakeaddress.com	8/29/1988	Michael.Danek.047	123456789012345678901234020351234	14	1	

With the document design requirements, data, and assets, we can now define the content objects and rules we need to create. Below is the list of tasks for this tutorial. For your reference, each is followed by the tutorial page number.

Front page tasks

- Replace the static image with the ulmage document package created in Tutorial 6 (page 10)

Module 2:

Creating a Graphic Content object for ulmage

Duration

About 5 minutes.

Objectives

After completing this module, you will be able to:

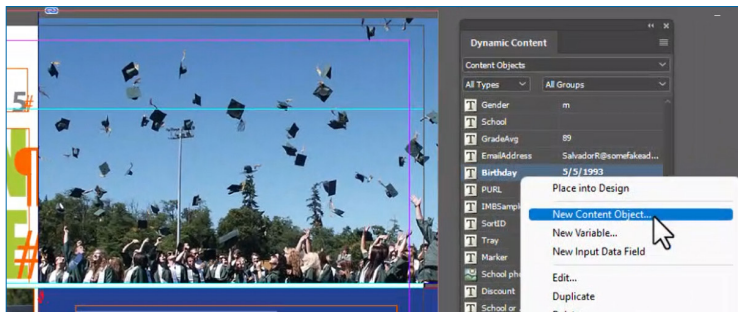
- Create a new Graphic Content object,
- Select a ulmage package and configure the data values to push into Photoshop to personalize the image.

Procedure

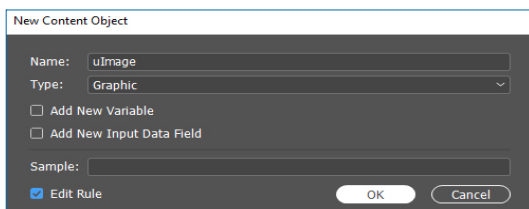
Creating a new Graphic Content object



Step by step instructions



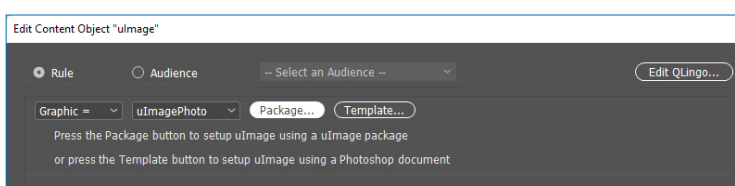
Right-click in the Dynamic Content panel and select **New content object...**



Enter a **Name** for the new Content object.

Set the **Type** to **Graphic**.

Check the box to **Edit Rule** and click **OK**.

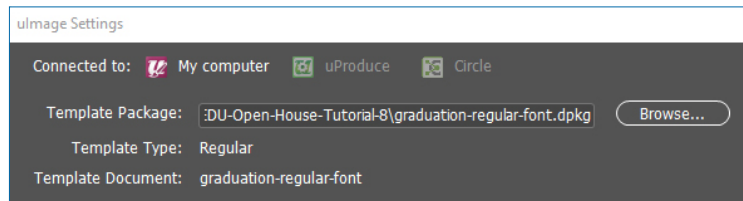


From the second drop-down, select **uImagePhoto** and click the **Package** button.

Configuring the ulmage Package settings

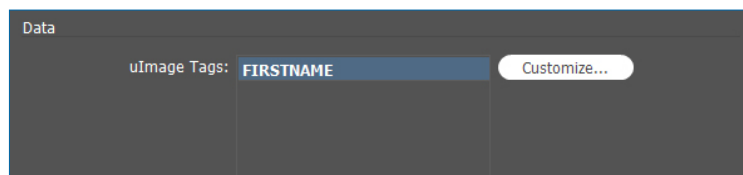


Step by step instructions

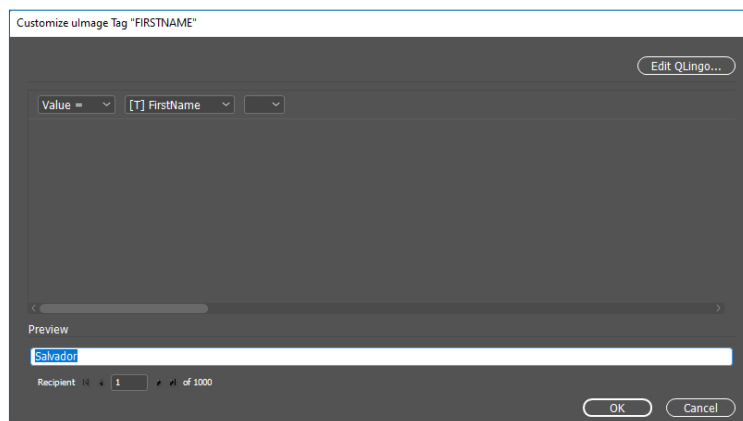


Click the **Browse** button and select the ulmage Document Package you created in Tutorial 6.

Alternatively, you can select the **graduation-regular-font.dpkg** provided with this tutorial's resource files.



Select the **FIRSTNAME** ulmage tag and click **Customize...**



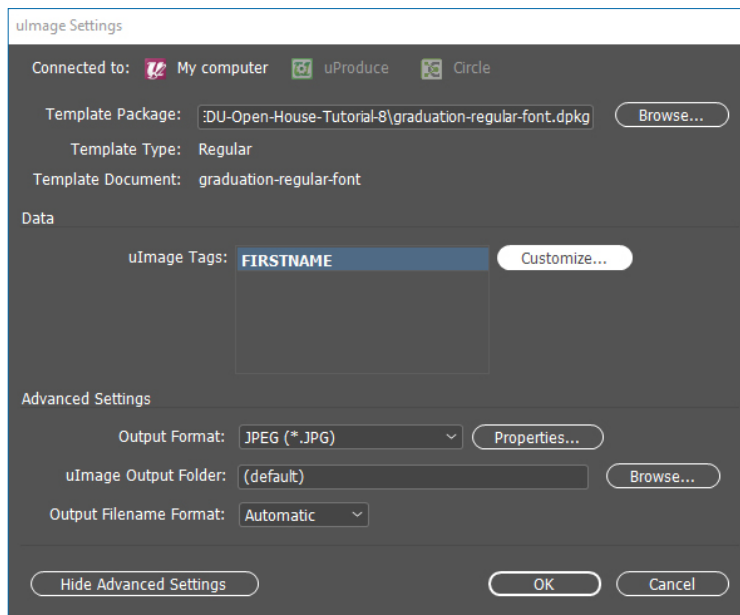
This dialog allows you to control what value will be pushed into Photoshop in the FIRSTNAME text layer.

In this example, the tag name is the same as a Content object, so you can simply click **OK**.



Additional information and notes

If the Tag name is the same as a Content object name, it will automatically be selected. You only need to Customize the tag if you want to put a different database field into the image, or if you want to format the value - for example, to uppercase the database value when inserting it into Photoshop.



You can change the **Output Format** if required.

It is recommended to leave the **Output Folder** and **Output Filename Format** to the default settings.

Refer to the ulmage User Guide if you want more information on these settings.

Click **OK** to save the ulmage settings.

Click **OK** to save the Graphic Content object settings.

There will be a short delay as Photoshop is started and a personalized image is created for the current recipient.



Additional information and notes

If Photoshop swaps in front of InDesign, you can swap back to InDesign.



Additional information and notes

Note that things like text alignment and copy fitting have already been configured in Photoshop when creating the ulmage package.

Module 3:

Placing the Graphic Content object into the design

Duration

About 5 minutes.

Objectives

After completing this module, you will be able to:


- Place a Graphic Content object into the InDesign document, and
- Set Dynamic Graphic Properties.

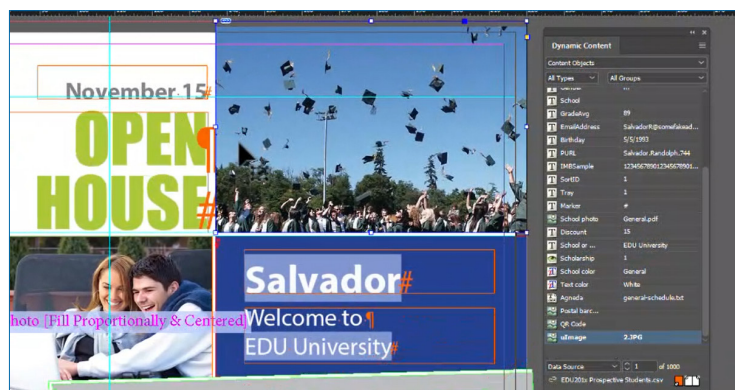
Procedure

Exporting the XMPie DPKG



Step by step instructions

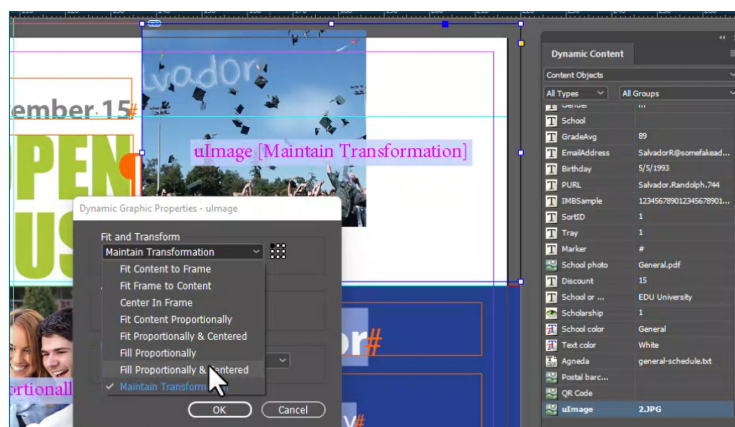
From the InDesign tool box, select the **Selection** tool (black pointer) .



Click to select the static graphic frame.

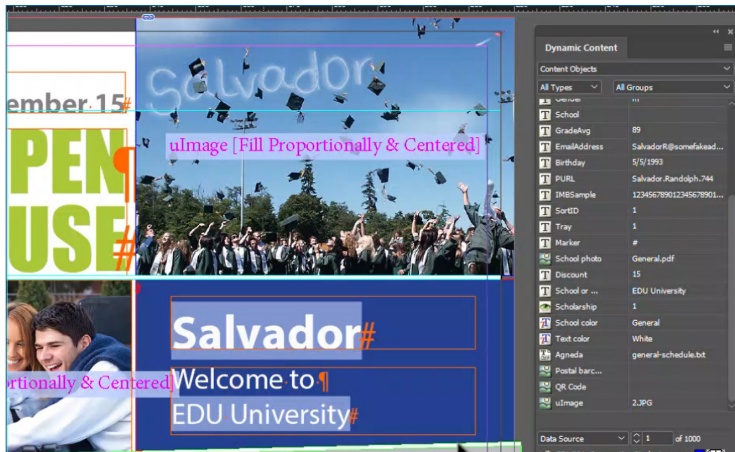
Double-click the new Graphic content object.

Right-click on the Graphic frame and select **Dynamic Graphic Properties** from the **Dynamic Content** group menu.



Set the graphic to **Fill Proportionally and Centered**.

Click **OK**.



The current recipient's
firstname appears correctly in
the personalized image.

Scroll through some more
records to confirm the
graphic changes as expected.



Additional information and notes

Note that it is slightly slower to scroll through records if the image has not been created for the next recipient. Photoshop must create the image before InDesign can display the record. If the personalized image has already been created for a particular firstname, there is no delay.

Click **Export** to create your XMPie Document Package.

Module 4:

Dynamic Print

Our dynamic template is complete. We are ready to create the output file to print. Please note that Generating VDP Output is only possible with a licensed version of uCreate Print.

Duration

About 10 minutes.

Objectives

After completing this module, you will be able to:

- Create print output of one or more data source records, and
- impose the output for optimized press sheet coverage.

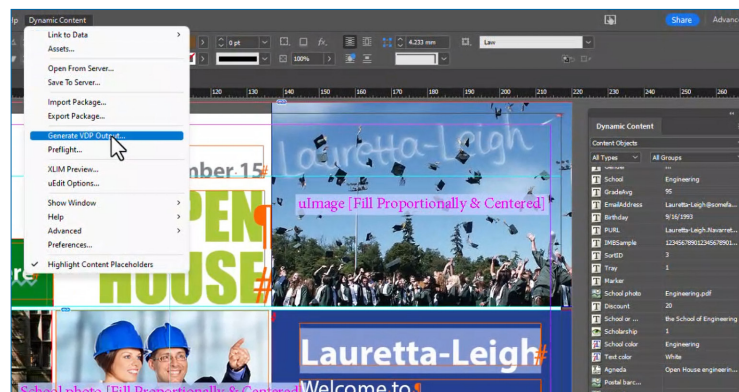
Procedure

Basic variable data print

In this example we use default print settings to create page-by-page output for each record.

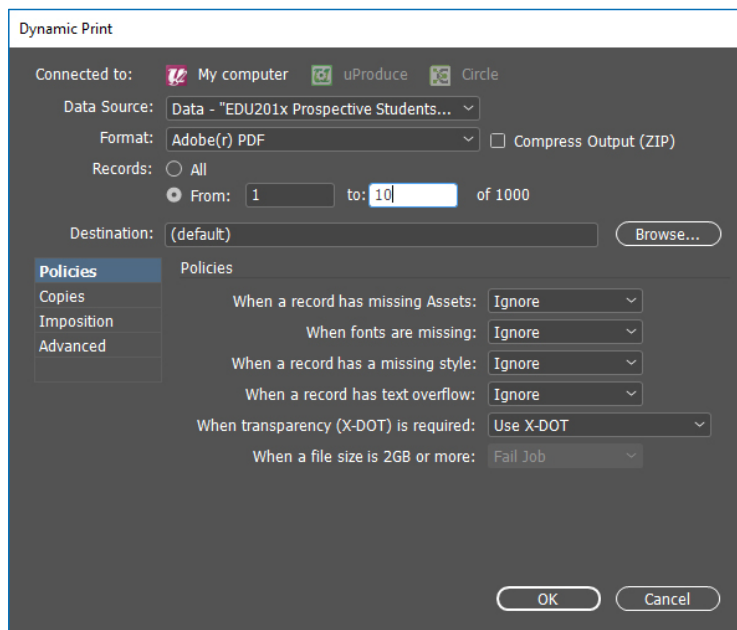


Step by step instructions



From the **Dynamic Content** menu, select **Generate VDP Output...**

If you have not already saved the document, you will be prompted to do so.



Set the output **Format** to **Adobe(r) PDF**.

Set the range of **Records** that you would like to print. I will set 1 to 10.

Click **OK**.

You will see a dialog indicating the print production progress. After a few moments, the dialog will close and you are returned to the document.



Additional information and notes

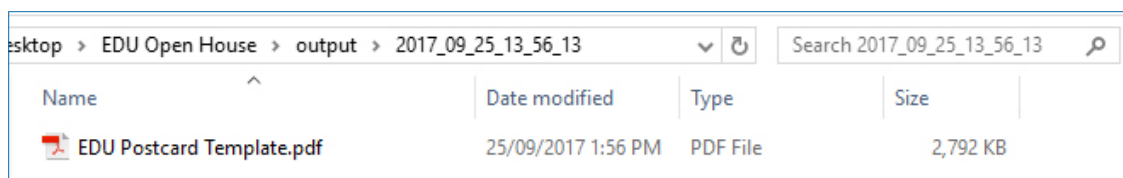
For more information on other settings in the Dynamic Print dialog, refer to the uCreate Print User Guide by selecting **Help** from the **Dynamic Content** menu.



Additional information and notes

In addition to PDF, uCreate Print can output several other VDP output formats including PS, VIPP, VPS, PPML and PDF/VT-1. The best one to use will depend on your printer so you should do some tests to see which is smallest/fastest.

In the folder where your InDesign document is saved, look for a new folder called **output**. Inside the output folder, uCreate Print will create a subfolder with the current date and time and save the output file into this folder.



Additional information and notes

On the Dynamic print dialog, you can also choose to set the **Destination**. If you choose to set a destination, uCreate Print will save the output file in the folder of your choice. If you print multiple times with a custom destination, each print will overwrite any previous output file in that location.

Variable data print with imposition

In this example we output the postcards imposed to a larger sheet size with bleed and trim marks.



Step by step instructions

From the **Dynamic Content** menu, select **Generate VDP Output...**

If you have not already saved the document, you will be prompted to do so.

Set the output **Format** to **Adobe PDF**.

Set the range of **Records** that you would like to print. I will set **From 1 and To 12**.

Click **OK**.

Click **Imposition**.

Set **Imposition Template** to **Step and Repeat**.

Set **Sheet Size** to **SRA3 Landscape**.

Set both **Margin Width** and **Height** to **0.08in** (or 2mm)

Check **Auto Calculate**.

Check **Duplex**.

Check **Centre Pages on Sheet**.

Check **Draw Cut Marks** and enter **0.12in** (or 3mm) for both **x** and **y** values.

Click **OK**.

When production finishes, check the output folder for a second subfolder, and open the output PDF to check your work.

A sample of the first page of the PDF output is shown below.



Review and extra exercises

To consolidate your understanding of the topics covered in this tutorial, please answer the following review questions, and complete the additional exercises:

Review questions

What type of Content object is required for ulmage? (Page 10)

.....

Can you configure the text to align left, center, or right in the ulmage Settings panel? (Page 12)

.....

Additional exercises

Exercise 1

In the previous tutorials we suggested that you create a ulmage package using one of your own images. Continue the same exercise by adding your ulmage package to an InDesign document using uCreate Print..